

**SPOT 2**

**Observations (14 marks)**

**TIME LIMIT: 40 MINUTES**

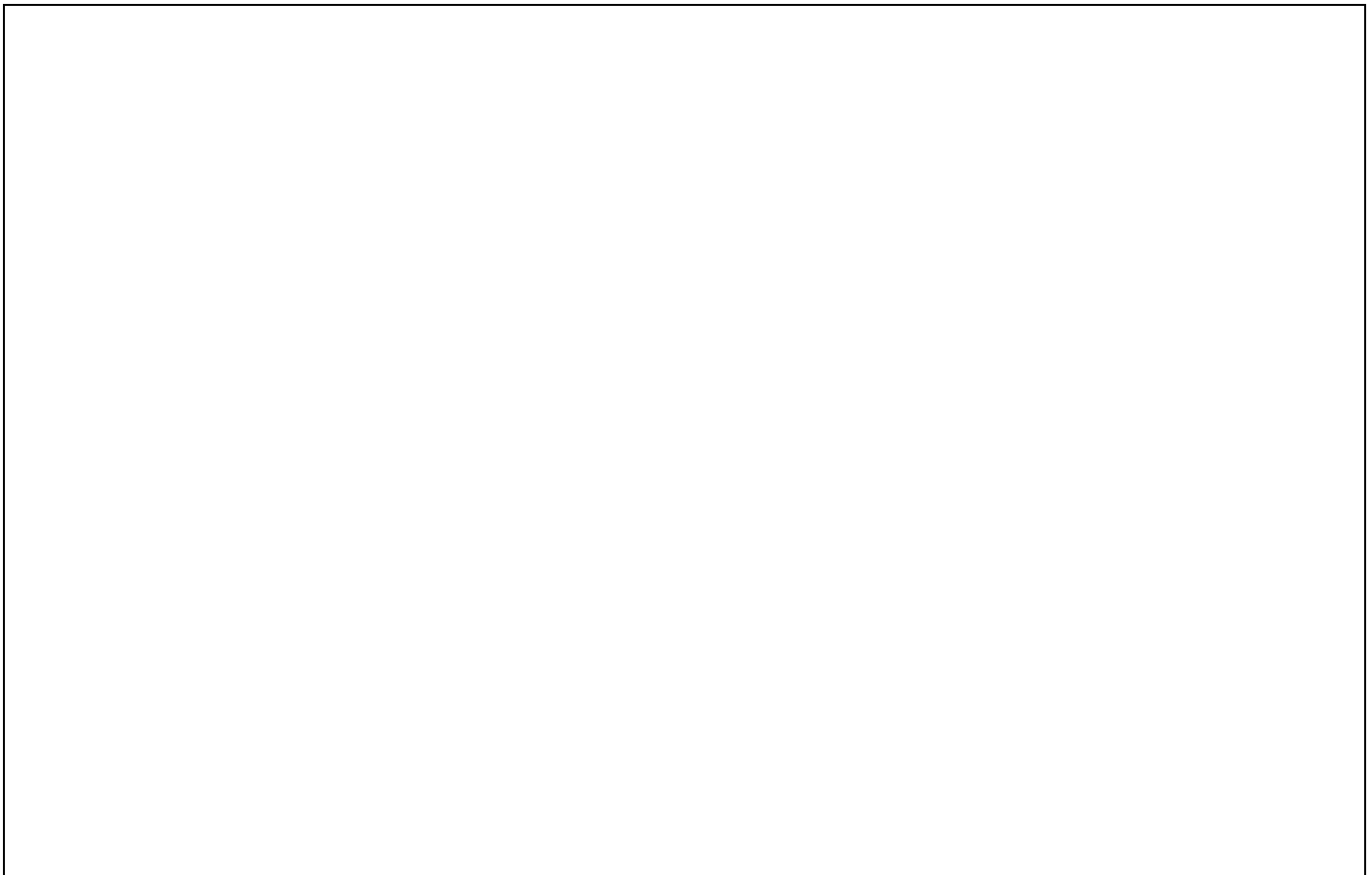
**Task Guideline**

You are now at the SPOT 2 Station (see Map 1A on a separate sheet).

1. Draw a sketch of the geological outcrop in front of you. [5 marks]

**Hints:**

A good outcrop sketch is a sketch that is proportional to its original shape. Therefore, placement in the drawing space is an important thing to note. Furthermore, do not neglect the important elements of the sketch such as geographical location, drawing scale, outcrop dimensions, orientation, and labels of the rocks or geological structures found at the location.



2. Based on your observation of the outcrop, **fill in** the blanks below. [2 mark]

a. Outcrop condition:

---

b. Outcrop colour:

---

3. Based on your observation of the rock outcrop, **identify** the different percentages of fragments and matrices of the outcrop [1.5 marks]

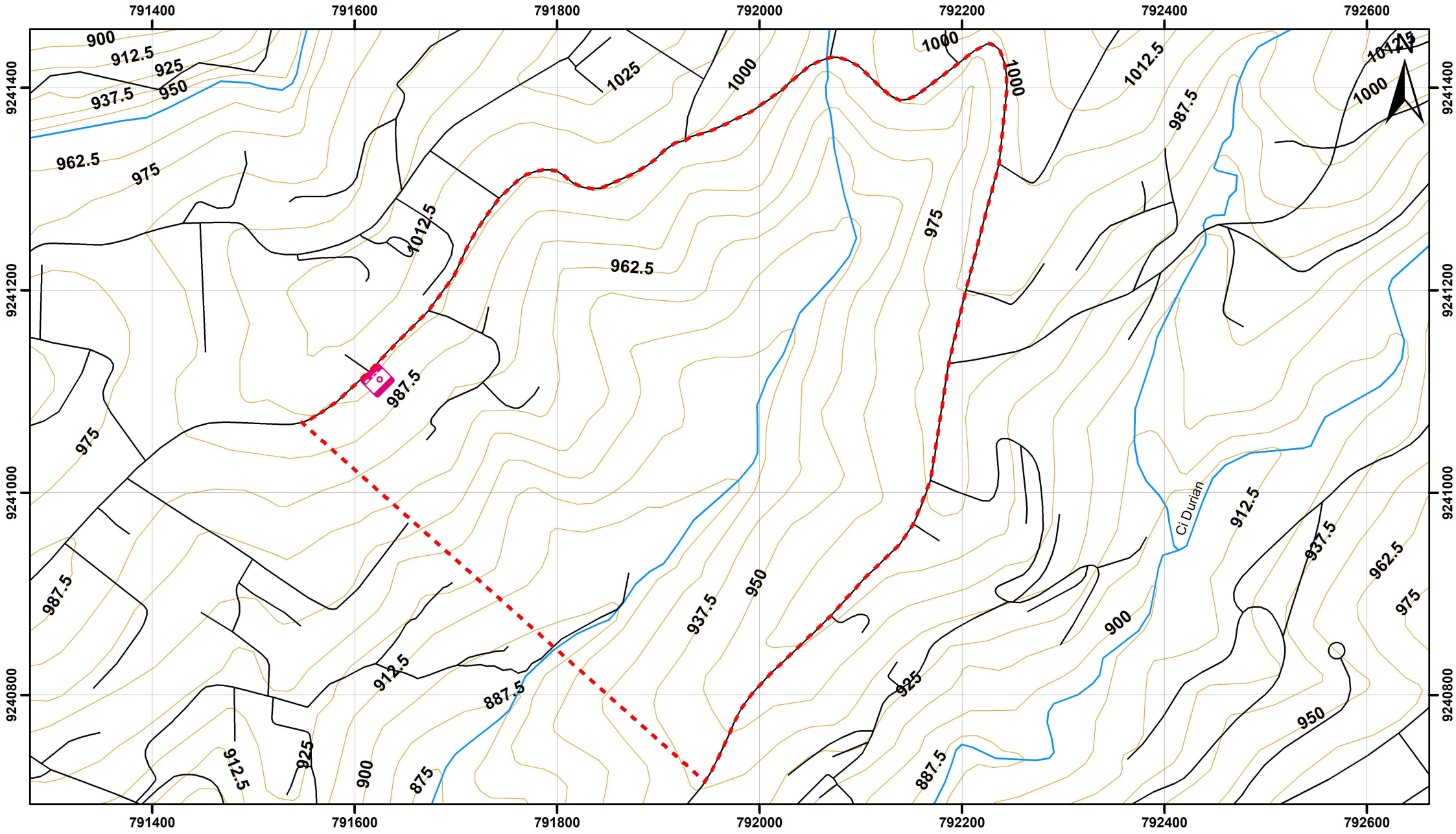
ROCK DESCRIPTION		ANSWER
Fragment and Matrix (%)	<b>Block and Bomb</b> (>64 mm)	
	<b>Lapilli</b> (2 – 64 mm)	
	<b>Ash</b> (<2 mm)	

4. **Identify** the rock type at Spot 2. [1 mark]
- 

5. Study your surroundings, then **fill in** the condition of the tropical rainforest's layers at the Juanda Forest Park. [4.5 marks]

LAYER NAME	PLANT DIVERSITY <i>(Homogeneous/Heterogeneous)</i>	HUMAN INTERFERENCE <i>(Exist/Non-Existent)</i>	EPIPHYTE <i>(Exist/Non-Existent)</i>
Forest Floor			
Understory			
Canopy			

**End of Question at Spot 2**



 Observation Spot      Observation Area

# MAP 1.2

STUDENT NUMBER: 19 \_\_\_\_\_